

CORRECTION

Open Access



Correction: whole exome sequencing revealed variants in four genes underlying X-linked intellectual disability in four Iranian families: novel deleterious variants and clinical features with the review of literature

Atefeh Mir¹, Yongjun Song², Hane Lee², Hossein Khanahmad³, Erfan Khorram¹, Jafar Nasiri⁴ and Mohammad Amin Tabatabaiefar^{1,3,5*}

Correction to: Mir et al. *BMC Medical Genomics* (2023) 16:239

<https://doi.org/10.1186/s12920-023-01680-y>.

Following the publication of the Original Article, a reader identified an error concerning Fig. 1. The error occurred due to an unintentional mistake during the image collage-making; the family “I” chromatogram was inadvertently duplicated for family “III”. The authors acknowledged the error and affirmed that the errors did not impact the calculations or the interpretation of the article’s results.

The online version of the original article can be found at <https://doi.org/10.1186/s12920-023-01680-y>.

*Correspondence:

Mohammad Amin Tabatabaiefar
tabatabaiefar@med.mui.ac.ir

¹Department of Genetics and Molecular Biology, School of Medicine, Isfahan University of Medical Sciences, Isfahan 81746 73461, Iran

²Division of Medical Genetics, 3Billion Inc, Seoul, South Korea

³Pediatric Inherited Diseases Research Center, Research Institute for Primordial Prevention of Noncommunicable Disease, Isfahan University of Medical Sciences, Isfahan, Iran

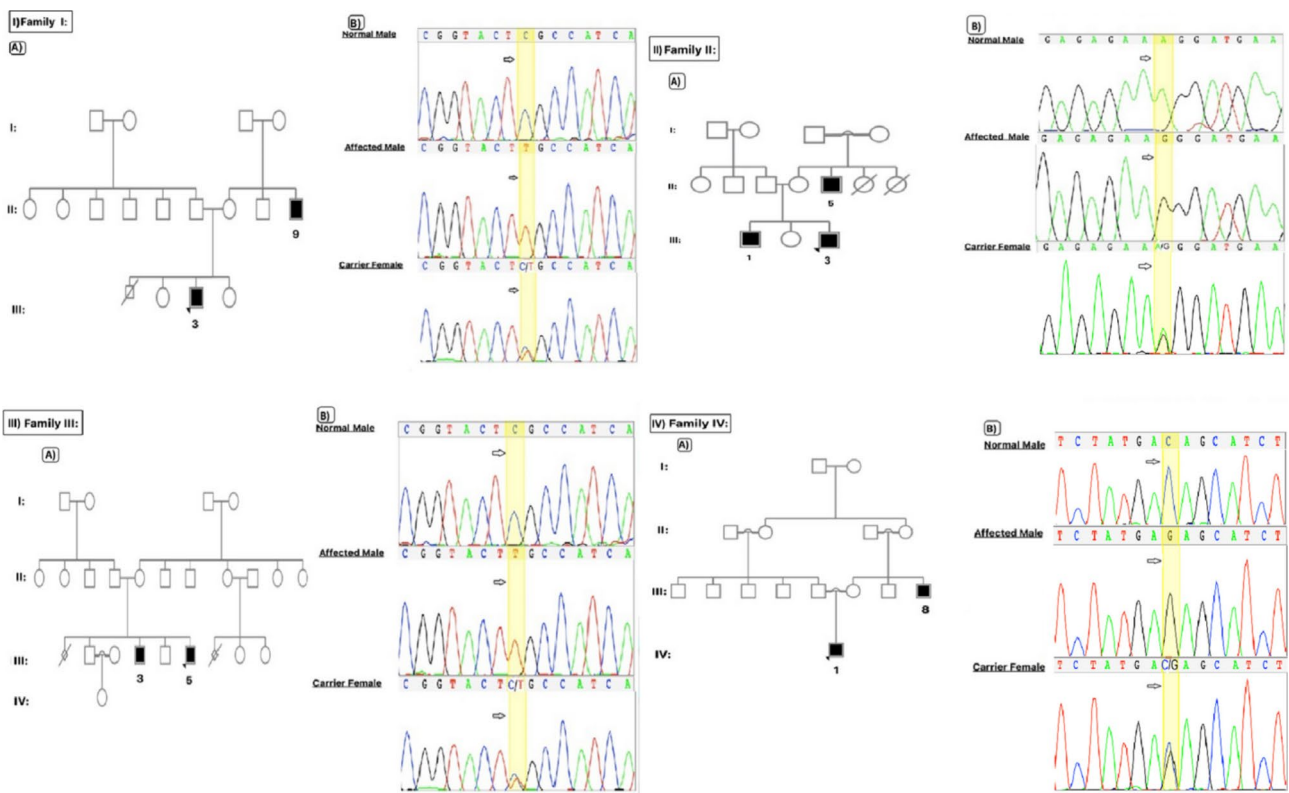
⁴Child Growth and Development Research Center, Research Institute for Primordial Prevention of Non-Communicable Disease, Isfahan University of Medical Sciences, Isfahan, Iran

⁵Deputy of Research and Technology, GenTarget Corp (GTAC), Isfahan University of Medical Sciences, Isfahan, Iran

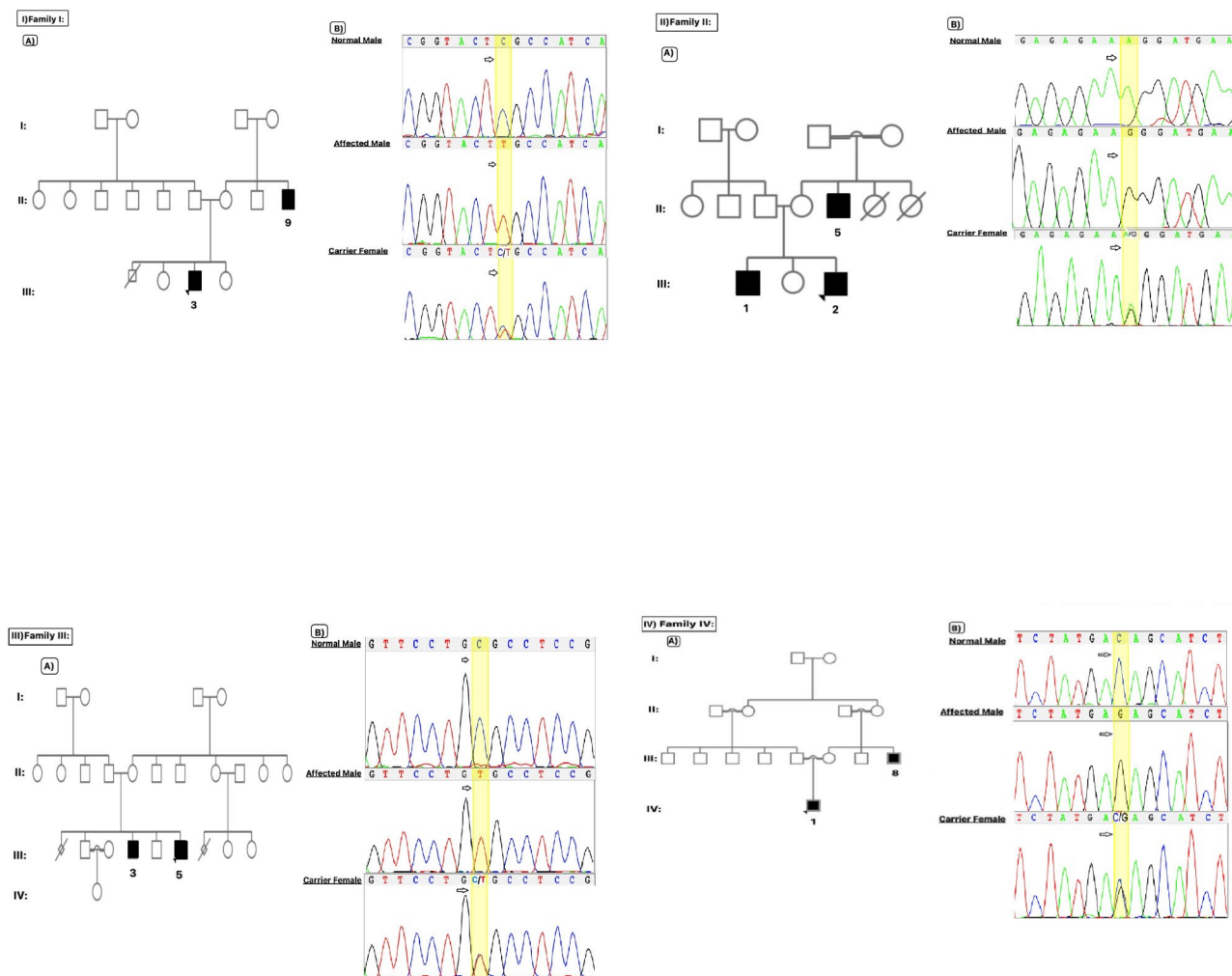


© The Author(s) 2025. **Open Access** This article is licensed under a Creative Commons Attribution 4.0 International License, which permits use, sharing, adaptation, distribution and reproduction in any medium or format, as long as you give appropriate credit to the original author(s) and the source, provide a link to the Creative Commons licence, and indicate if changes were made. The images or other third party material in this article are included in the article's Creative Commons licence, unless indicated otherwise in a credit line to the material. If material is not included in the article's Creative Commons licence and your intended use is not permitted by statutory regulation or exceeds the permitted use, you will need to obtain permission directly from the copyright holder. To view a copy of this licence, visit <http://creativecommons.org/licenses/by/4.0/>. The Creative Commons Public Domain Dedication waiver (<http://creativecommons.org/publicdomain/zero/1.0/>) applies to the data made available in this article, unless otherwise stated in a credit line to the data.

The incorrect figure is as follows:



The correct figure is as follows:



The authors thank the reader for pointing out the error.
The Original Article has been corrected.

Published online: 27 February 2025

Publisher's note

Springer Nature remains neutral with regard to jurisdictional claims in published maps and institutional affiliations.